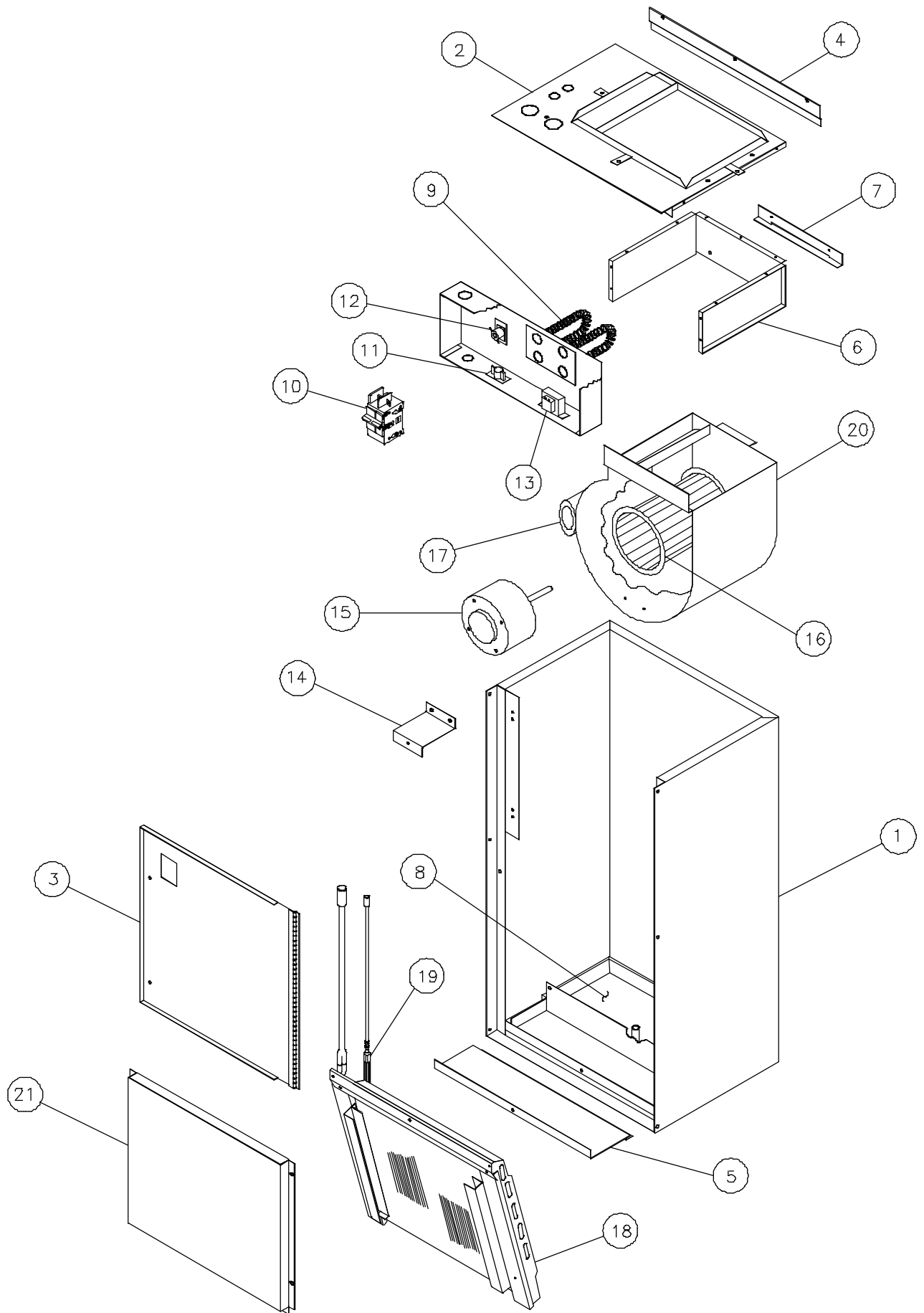


REPAIR PARTS

MODEL: AW SERIES
IN WALL AIRHANDLER



REPLACEMENT PARTS LIST

UNIT: IN WALL AIRHANDLERS

MODEL: AW

REF. NO.	PART NO.	DESCRIPTION	QTY. PER SIZE								
			A W	A W	A W	A W	A W	A W	A W	A W	A W
			1	1	2	2	2	3	3	3	
			8	8	4	4	4	0	0	0	
			-	-	-	-	-	-	-	-	
			0	0	0	0	1	0	0	1	
			5	8	5	8	0	5	8	0	
			C	C	C	C	C	C	C	C	
1	2000105	WRAPPER SPOT/WELD ASSEMBLY	1	1	1	1	1	1	1	1	
2	2000204	TOP PANEL SPOT/WELD ASSEMBLY	1	1	1	1	1	1	1	1	
3	2000412P	ACCESS PANEL & HINGE ASSEMBLY	1	1	1	1	1	1	1	1	
4	2000814	OFFSET BRACKET	1	1	1	1	1	1	1	1	
5	2000407	PANEL, DRAIN ACCESS	1	1	1	1	1	1	1	1	
6	2000607	SHIELD, HEATER ELEMENT	1	1	1	1	1	1	1	1	
7	2000710	BRACKET, BLOWER SUPPORT	1	1	1	1	1	1	1	1	
8	2055902L	DRAIN PAN ASSEMBLY	1	1	1	1	1	1	1	1	
9	*B1037485 *B1037487 *B1037488	ELEMENT, HEATER, W/LIMIT SWITCH 5.0 KW, 230 VOLTS ELEMENT, HEATER, W/LIMIT SWITCH 7.5 KW, 230 VOLTS ELEMENT, HEATER, W/LIMIT SWITCH 10 KW, 230 VOLTS	1	1	1	1	1	1	1	1	
10	B1753510 B1753511	BREAKER, CIRCUIT (30 AMP), I.T.E. #BQ2B030 BREAKER, CIRCUIT (60 AMP), I.T.E. #BQ2B030	1	1	1	1	1	1	1	1	
11	B1256551 B1256552	SEQUENCER, THERMODISC #309561 T.I. #51172-20-20 SEQUENCER, THERMODISC #309562 T.I. #51172-30-10	1	1	1	1	1	1	1	1	
12	B1370738	RELAY, TIME DELAY, 24 VOLT COIL T.I. #60000CO-27	1	1	1	1	1	1	1	1	
13	B1141643	TRANSFORMER, 45 VA, 208/230VOLT, PRIMARY, 24 VOLT SECONDARY	1	1	1	1	1	1	1	1	
14	2000711	BRACKET, BLOWER	1	1	1	1	1	1	1	1	
15	B13400312 B13400313	MOTOR, DIRECT DRIVE, 1/3 HP, 2 SPEED, 208/230-60-1, PSC, FLEX-MOUNT, 1075 RPM, G.E. #5KCP39GGP993AS MOTOR, DIRECT DRIVE, 1/5 HP, 2 SPEED, 208/230-60-1, PSC, FLEX-MOUNT, 1075 RPM, G.E. #5KCP39HGM689S	1	1	1	1	1	1	1	1	
16	B1368042	WHEEL, BLOWER (9" D X 6" WIDE)	1	1	1	1	1	1	1	1	
17	B945650 B945651	CAPACITOR, RUN, 5 MFD, 370 VAC CAPACITOR, RUN, 7.5 MFD, 370 VAC	1	1	1	1	1	1	1	1	
18	2085006 2085007S 2085008S	COIL TUBING ASSEMBLY (COMPLETE) COIL TUBING ASSEMBLY (COMPLETE) COIL TUBING ASSEMBLY (COMPLETE)	1	1	1	1	1	1	1	1	
19	B1314252 B1314359 B1313365	FLOWRATER DIST. ASSEMBLY FLOWRATER DIST. ASSEMBLY FLOWRATER DIST. ASSEMBLY	1	1	1	1	1	1	1	1	
20	2939300	BLOWER SHELL ASSEMBLY	1	1	1	1	1	1	1	1	
21	2000413	FRONT ACCESS PANEL	1	1	1	1	1	1	1	1	

*LIMIT SWITCHES CANNOT BE INTERCHANGED IN OTHER HEAT ELEMENTS.
IMPORTANT: MUST USE LIMIT SWITCHES IN HEATER ELEMENTS AS SHOWN ABOVE